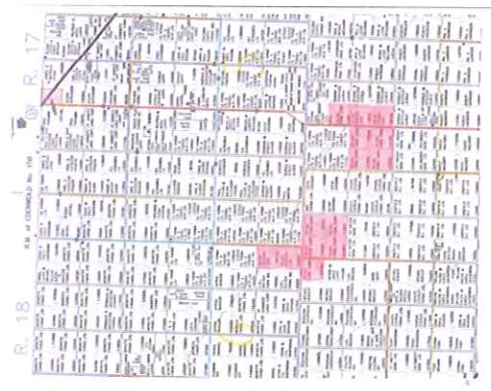





 Listing
RM LAJORD

SK716619 Active

LP: \$7,550,000
DOM: 1



Prop Type: Farm
SubType: Grain
Style:
Bldg Type:
Prop Offer: Land Only
Min Rights: Not Included, Not Owned By Seller
Tot Lnd Area: 2,234.75 / Acres
Legal: TELSEC PROPERTIES
Ownership:
Location: Lajord Rm No. 128
Postal Code: S0G 2V0
Possession: COD
Tax Amt/Yr:
List Brokerage: Homelife Prairies Realty Inc.

Public Remarks: Excellent package of Heavy Clay farmland, located only 7 miles south of Kronau, and close to Regina. Some 2,234 acres of excellent grain land, the land is currently rented out. According to the rental agreement there are some 2,190 cultivated acres. The land is mainly all B & C soil class apart from 2 quarters. Here is an opportunity to own some 14 quarters of Regina Heavy Clay Land. Please call the listing agent for more information.
Directions: SOUTH FROM KRONAU

Parcel Information

RM	Parcel	Dir	Sec	TWP	RGE	Mer	CI	Soil	Asse	Tax	Cult	Not Cult	Total	SI Stat
Lajord RM No. 128	112514523	SW	32	14	17	2		E	61,700	256	64.00	16.00	39.66	Active
Lajord RM No. 128	112514509	SW	32	14	17	2		0	0	0	39.00	0.00	39.10	Active
Lajord RM No. 128	112514858	SW	32	14	17	2		C	96,400	362	69.00	0.00	39.05	Active
Lajord RM No. 128	112514846	SW	32	14	17	2		0	0	0	69.00	0.00	39.61	Active
Lajord RM No. 128	108071647	SW	30	14	17	2		B	264,000	806	160.00	0.00	160.50	Active
Lajord RM No. 128	108057292	SE	30	14	17	2		B	247,900	892	159.00	0.00	158.84	Active
Lajord RM No. 128	108057315	NE	30	14	17	2		B	284,200	1,003	159.00	0.00	159.23	Active
Lajord RM No. 128	108057304	NW	30	14	17	2		B	279,200	853	160.00	0.00	100.46	Active
Lajord RM No. 128	108070905	NE	34	14	18	2		C	237,000	724	140.00	22.00	162.16	Active
Lajord RM No. 128	108053041	SE	25	14	15	2		C	254,700	778	160.00	0.00	160.12	Active
Lajord RM No. 128	108053052	SW	35	14	18	2		C	274,800	839	160.00	0.00	160.00	Active
Lajord RM No. 128	108053063	NE	35	14	12	2		B	284,200	868	163.00	3.00	163.36	Active
Lajord RM No. 128	108070926	NW	35	14	18	2		B	285,000	870	160.00	3.00	163.39	Active
Lajord RM No. 128	108071636	NW	29	14	17	2		C	261,100	932	158.00	0.00	158.10	Active
Lajord RM No. 128	161628824	SW	29	14	17	2		C	221,200	810	221,200.00	13.00	158.20	Active
Lajord RM No. 128	131871618	SE	2	15	18	2		D	283,500	956	160.00	0.00	158.19	Active
Lajord RM No. 128	108130339	NE	2	15	18	2		C	238,300	808	154.00	11.00	154.28	Active

Property Information

Env Audit: No
Livestk/Crop: No
Metal Gran
Bush: None
Stones: None
Det Package:
Distance To:
Topography: Flat
Propane Tank: Not Included
Marketing Quota: No
Livestock Desc:
Metal Bins: 5
Town: 10
Irrigated: Yes
Met Cap: 12,300
Sloughs: Some
Wrkshp Ht: No
Drink Water: No
High School:
Power:
Elem Schl:
Wtr Treat:

House Information

Garage Desc: No Garage

This information is believed to be reliable but should not be relied upon without verification.



MONETTE FARMS LTD. 122000 MONETTE FARMS LTD. 108500 MONETTE FARMS LTD. 103700 MONETTE FARMS LTD. 73500	MONETTE FARMS LTD. 113800 MONETTE FARMS LTD. 124400 MONETTE FARMS LTD. 125900 MONETTE FARMS LTD. 113800	MONETTE FARMS LTD. 121900 MONETTE FARMS LTD. 120000 MONETTE FARMS LTD. 123900 MONETTE FARMS LTD. 124300 ROMULUS & MAGDALENA CISMARU 123900	MONETTE FARMS LTD. 123600 MONETTE FARMS LTD. 123900 MONETTE FARMS LTD. 115800 MONETTE FARMS LTD. 116900	ARINA, LAURA & MICHAEL McLEAN 83500 MONETTE FARMS LTD. 128700 MONETTE FARMS LTD. 125900 MONETTE FARMS LTD. 129000	HUGH & TRACY GHERASIM 122300 MONETTE FARMS LTD. 98800 MONETTE FARMS LTD. 125500 MONETTE FARMS LTD. 127000	HUGH & TRACY GHERASIM 121900 JOHN MCCALL 86300 MONETTE FARMS LTD. 95900 MONETTE FARMS LTD. 112900	GK FARMS LTD. 115900 JOHN MCCALL 110900 HUGH & TRACY GHERASIM 109200 MONETTE FARMS LTD. 76100	GK FARMS LTD. 118600 KARL & KATHLEEN POSEHN 120900 NAMIK & NEVZAT ALKAN 114400 NAMIK & NEVZAT ALKAN 112800	JAMES & MICHELLE ETTER 125600 KARL & KATHLEEN POSEHN 116900 KARL & KATHLEEN POSEHN 119800 HCI VENTURES LTD. 126200	RUTH & GLEN EUTENEIER, LEANNE PRYSTUPA 122900 PAUL FAHLMAN 121100 RUTH & GLEN EUTENEIER, LEANNE PRYSTUPA 130000 KF KAMBEITZ LAND CORP. 128400 KF KAMBEITZ LAND CORP. 117100	PAUL FAHLMAN 104200 GLENN EUTENEIER 126800 GLENN EUTENEIER 125000 FAHLMAN FARMS LTD. 98200	JAMES & MICHELLE ETTER 123200 RICHARD CARSON & ROBERT METCALFE 113900 WILFRED & MONA LEIPPI 130000 LEIPPI FARMS INC. 96700 KF KAMBEITZ LAND CORP. 114600 KF KAMBEITZ LAND CORP. 88900	RICHARD CARSON & ROBERT METCALFE 123200 WILFRED & MONA LEIPPI 130000 LEIPPI FARMS INC. 96700 KF KAMBEITZ LAND CORP. 114600 KF KAMBEITZ LAND CORP. 88900	MAX WETSTEIN 62800 WILFRED & MONA LEIPPI 65000		
NICHOLAS & DONALD DOBERG 41500 96200 BRUCE & CAROLIN GOODING 65000 LEETA GOODING 62000 LEETA GOODING 60900 MONETTE FARMS LTD. 62000 MONETTE FARMS LTD. 125900 LEETA GOODING 62000 MONETTE FARMS LTD. 128800 MONETTE FARMS LTD. 121500	MONETTE FARMS LTD. 125900 LEETA GOODING 62000 MONETTE FARMS LTD. 117900 MONETTE FARMS LTD. 125900 MONETTE FARMS LTD. 114500 I & M FARMS LTD. 65000 MONETTE FARMS LTD. 124900 LEETA GOODING 94400 ALLIANCE FLYING STATION 65000	MONETTE FARMS LTD. 117900 MONETTE FARMS LTD. 125900 MONETTE FARMS LTD. 117900 MONETTE FARMS LTD. 129200 MONETTE FARMS LTD. 129000 GK FARMS LTD. 129200 GK FARMS LTD. 128400 C2 FARMS LTD. & 1592581 ALTA LTD. 128400 C2 FARMS LTD. & 1592581 ALTA LTD. 115100 C2 FARMS LTD. & 1592581 ALTA LTD. 59500	MONETTE FARMS LTD. 129200 MONETTE FARMS LTD. 129200 MONETTE FARMS LTD. 129600 C2 FARMS LTD. & 1592581 ALTA LTD. 127600 C2 FARMS LTD. & 1592581 ALTA LTD. 120500 C2 FARMS LTD. & 1592581 ALTA LTD. 120500	MONETTE FARMS LTD. 119800 MONETTE FARMS LTD. 87000 RICHARD & SUSAN POSEHN 91200 GK FARMS LTD. 129600 C2 FARMS LTD. & 1592581 ALTA LTD. 127600 C2 FARMS LTD. & 1592581 ALTA LTD. 120500 C2 FARMS LTD. & 1592581 ALTA LTD. 120500	MONETTE FARMS LTD. 119800 MONETTE FARMS LTD. 87000 HCI VENTURES LTD. 114600 HCI VENTURES LTD. 74100 HCI VENTURES LTD. 125500 CLIFFORD POSEHN 100100 LYNN & SHARON PETERSON 91700	MONETTE FARMS LTD. 119800 MONETTE FARMS LTD. 87000 HCI VENTURES LTD. 114600 HCI VENTURES LTD. 74100 HCI VENTURES LTD. 125500 CLIFFORD POSEHN 100100 LYNN & SHARON PETERSON 91700	KARL & KATHLEEN POSEHN 114600 HCI VENTURES LTD. 115500 HCI VENTURES LTD. 74100 HCI VENTURES LTD. 125500 WILMA EUTENEIER 59100 DANIEL COUPL 58800 DARYL MACKENZIE 51900 DANIEL COUPL 52400	KARL & KATHLEEN POSEHN 114600 HCI VENTURES LTD. 115500 HCI VENTURES LTD. 74100 HCI VENTURES LTD. 125500 WILMA EUTENEIER 59100 DANIEL COUPL 58800 DARYL MACKENZIE 51900 DANIEL COUPL 52400	WOODROW & JOANNE LEIPPI 87300 DAVID & REBECCA ZEMAN 60600 DAVID & REBECCA ZEMAN 65000 C2 FARMS LTD. & 1592581 ALTA LTD. 128000 C2 FARMS LTD. & 1592581 ALTA LTD. 125800 REX & DONNA CAMERON 52400 WALTER & GARRETT BECHARD 107600 EVA EUTENEIER 86400 WALTER & GARRETT BECHARD 87200 LEETA GOODING 100600 LEETA GOODING 98800	PAGES PLUS FARMS INC. 80900 WILFRED & MONA LEIPPI 103000 DANIEL COUPL 59100 DANIEL COUPL 58800 DARYL MACKENZIE 51900 DANIEL COUPL 52400 WALTER & GARRETT BECHARD 107600 EVA EUTENEIER 86400 WALTER & GARRETT BECHARD 87200 LEETA GOODING 100600 LEETA GOODING 98800	FAHLMAN FARMS LTD. 102900 GERALD & CATHERINE LEIPPI 104200 DANIEL COUPL 103000 ERWIN & CAROLYN BEITEL 113200 RAYMOND POSEHN 123800 C2 FARMS LTD. & 1592581 ALTA LTD. 126600 C2 FARMS LTD. & 1592581 ALTA LTD. 86900 CAROL & LAVERNE GOODING 71900 CAROL & LAVERNE GOODING 79300 MARLENE ANDREE 32400	FAHLMAN FARMS LTD. 102900 GERALD & CATHERINE LEIPPI 104200 DANIEL COUPL 103000 ERWIN & CAROLYN BEITEL 113200 RAYMOND POSEHN 123800 C2 FARMS LTD. & 1592581 ALTA LTD. 126600 C2 FARMS LTD. & 1592581 ALTA LTD. 86900 CAROL & LAVERNE GOODING 71900 CAROL & LAVERNE GOODING 79300 MARLENE ANDREE 32400	WILFRED & MONA LEIPPI 51900 C2 FARMS LTD. & 1592581 ALTA LTD. 51100 GERALD & CATHERINE LEIPPI 104200 DANIEL COUPL 103000 ERWIN & CAROLYN BEITEL 113200 RAYMOND POSEHN 123800 C2 FARMS LTD. & 1592581 ALTA LTD. 126600 C2 FARMS LTD. & 1592581 ALTA LTD. 86900 CAROL & LAVERNE GOODING 71900 CAROL & LAVERNE GOODING 79300 MARLENE ANDREE 32400	GERALD & CATHERINE LEIPPI 104200 DANIEL COUPL 103000 ERWIN & CAROLYN BEITEL 113200 RAYMOND POSEHN 123800 C2 FARMS LTD. & 1592581 ALTA LTD. 126600 C2 FARMS LTD. & 1592581 ALTA LTD. 86900 CAROL & LAVERNE GOODING 71900 CAROL & LAVERNE GOODING 79300 MARLENE ANDREE 32400	STEVEN & SANDRA LEPP 12400 DANIEL COUPL 11000 RUSSELL & MELANIE LANSSELL 11000 C2 FARMS LTD. & 1592581 ALTA LTD. 112900 LEIPPI FARMS INC. 54100 GOLDEN EARTH FARMS INC. 60900 LARRY & GWEN POSEHN 108100 LARRY & GWEN POSEHN 118300 HCI VENTURES LTD. 123000 HCI VENTURES LTD. 129000 HCI VENTURES LTD. 126700 C2 FARMS LTD. & 1592581 ALTA LTD. 101400 C2 FARMS LTD. & 1592581 ALTA LTD. 104300 C2 FARMS LTD. & 1592581 ALTA LTD. 118400	STEVEN & SANDRA LEPP 12400 DANIEL COUPL 11000 RUSSELL & MELANIE LANSSELL 11000 C2 FARMS LTD. & 1592581 ALTA LTD. 112900 LEIPPI FARMS INC. 54100 GOLDEN EARTH FARMS INC. 60900 LARRY & GWEN POSEHN 108100 LARRY & GWEN POSEHN 118300 HCI VENTURES LTD. 123000 HCI VENTURES LTD. 129000 HCI VENTURES LTD. 126700 C2 FARMS LTD. & 1592581 ALTA LTD. 101400 C2 FARMS LTD. & 1592581 ALTA LTD. 104300 C2 FARMS LTD. & 1592581 ALTA LTD. 118400